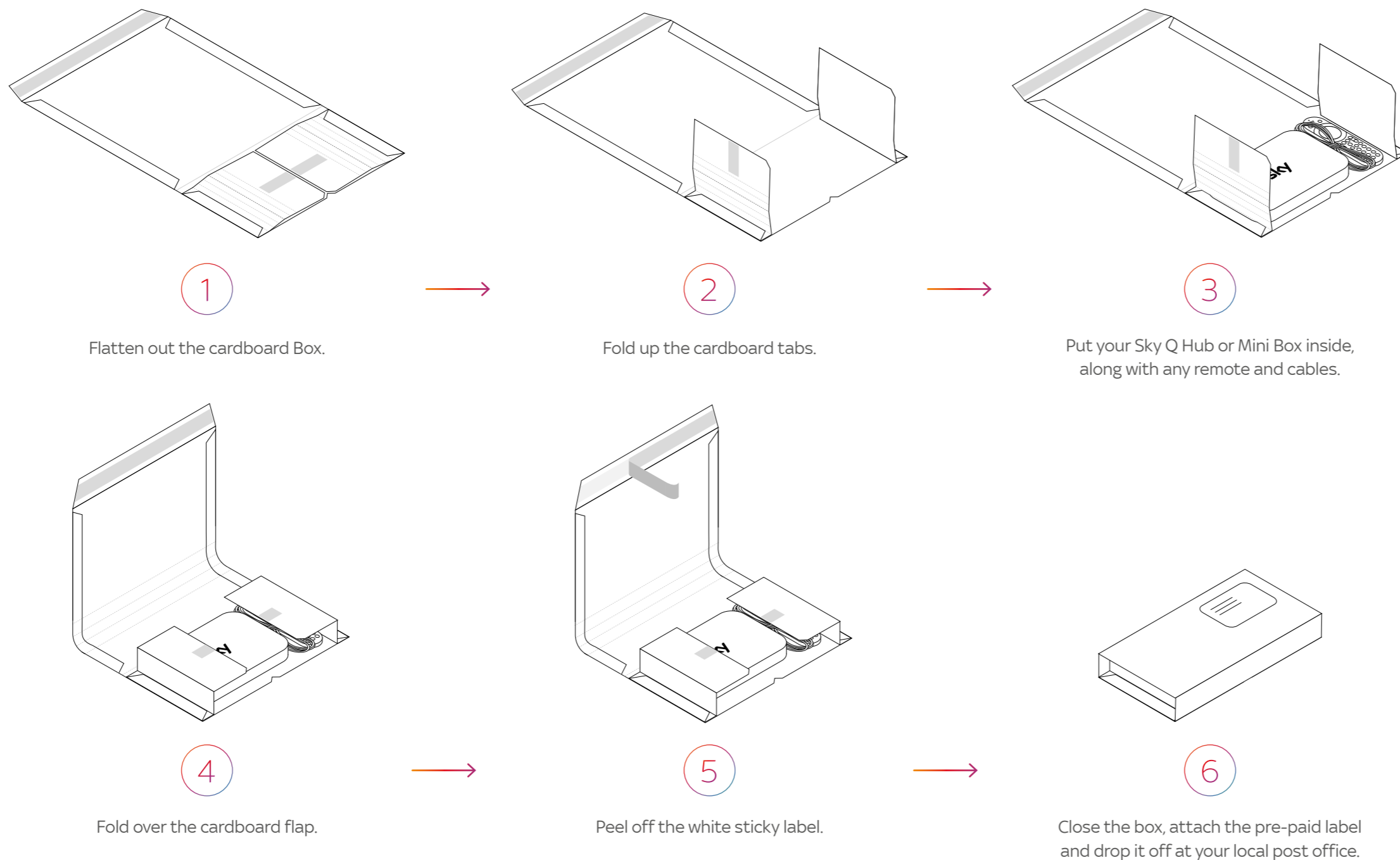


# Hub and Mini Box Packing Instructions

We want to make returning your Sky Q Hub and Mini Box as easy as possible. So we've included the following step-by-step guide to help you.



# Returning your Sky Q equipment

For the Hub and Mini Box only, open this way



For the Main Box, plus any Mini Boxes, open this way

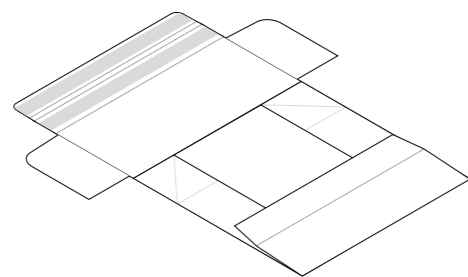


# Main Box Packing Instructions

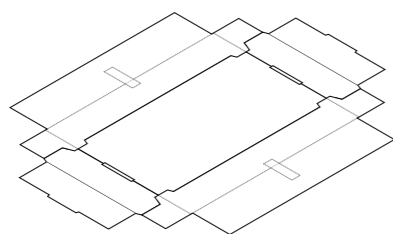
We want to make returning your Sky Q Main Box as easy as possible. So we've included the following step-by-step guide to help you.



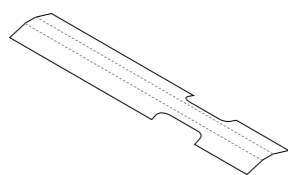
You should have the following cardboard items:



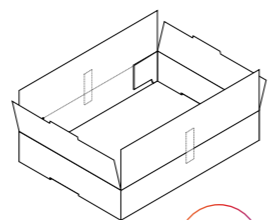
1 Inner Box



1 Outer Box

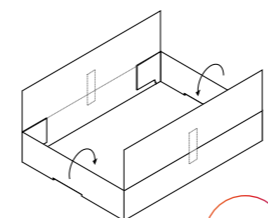


1 Connector Protector



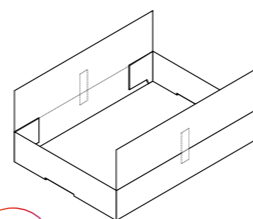
1

**Inner Box**  
Fold up the four sides.



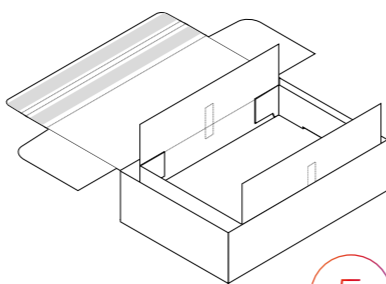
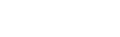
2

**Inner Box**  
Fold and lock down the shorter sides.



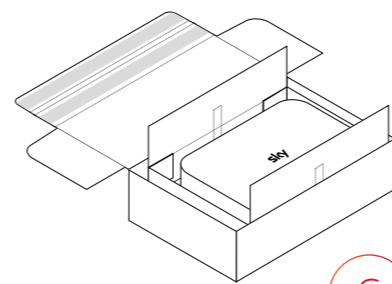
3

**Inner Box**  
It should now look like this.



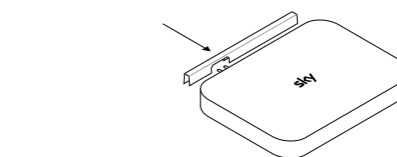
4

**Outer Box**  
Pull open the pop-up box and fold down the tab on the side.



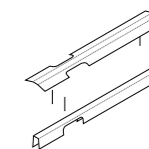
5

Place your Sky Q Main Box inside the Inner Box. Put any remote and cables in the small left hand compartment of the Outer Box.



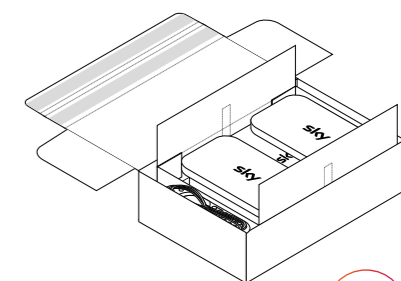
6

Put the protector over the cable units at the back of your Sky Q Main Box.



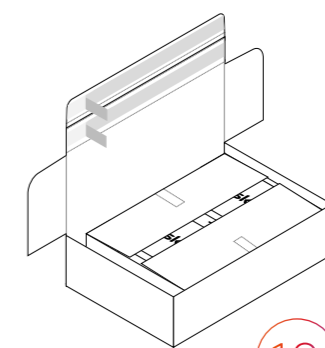
7

Pinch the Connector Protector.



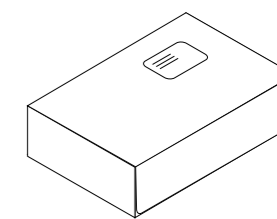
8

Put any Mini Boxes or cable routers on top of your Sky Q Main Box. Close the lid and push in the cut-out tabs.



9

Peel the sticky labels on the Outer Box.



10

Fold in the tabs, close the box, attach the pre-paid label and drop it off at your local post office.